

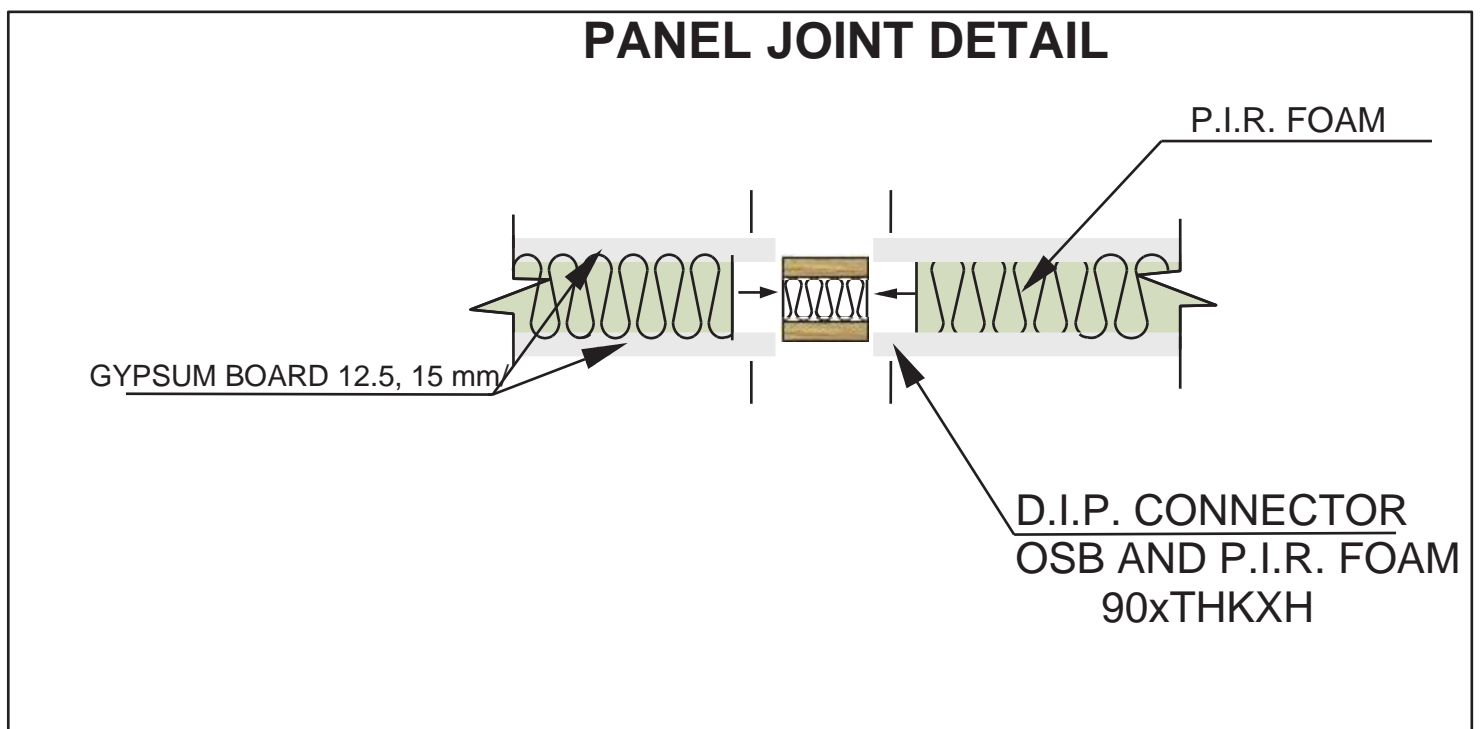
D.I.P. - DIVIDING INSULATED PANELS Self-Bearing Wall System



- TECHNICAL DETAILS -



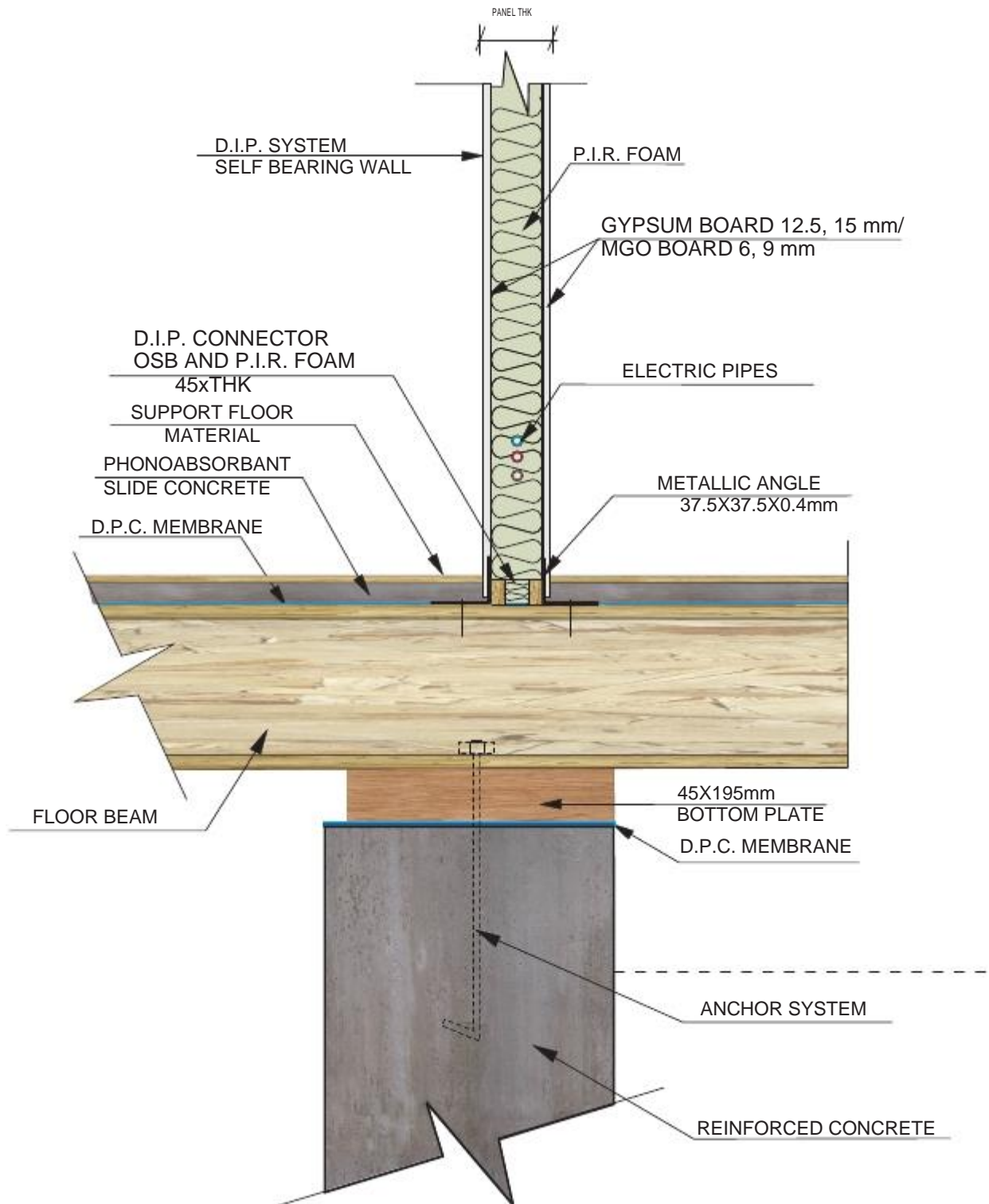
D.I.P. - JOINT DETAILS



HORIZONTAL SECTION

FIG.1

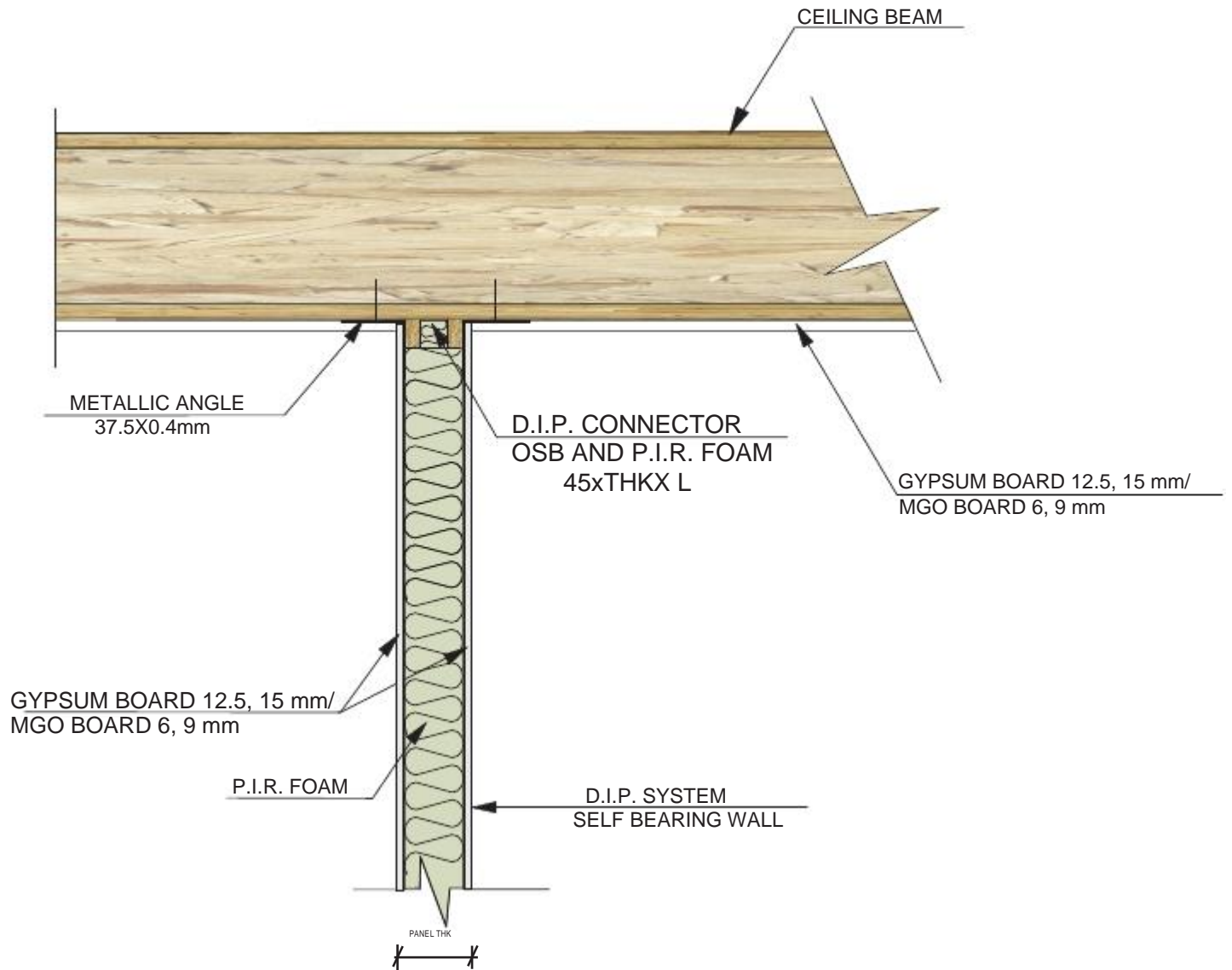
CONNECTION ON DIVIDING WALL TO FOUNDATION



VERTICAL SECTION

FIG.2a

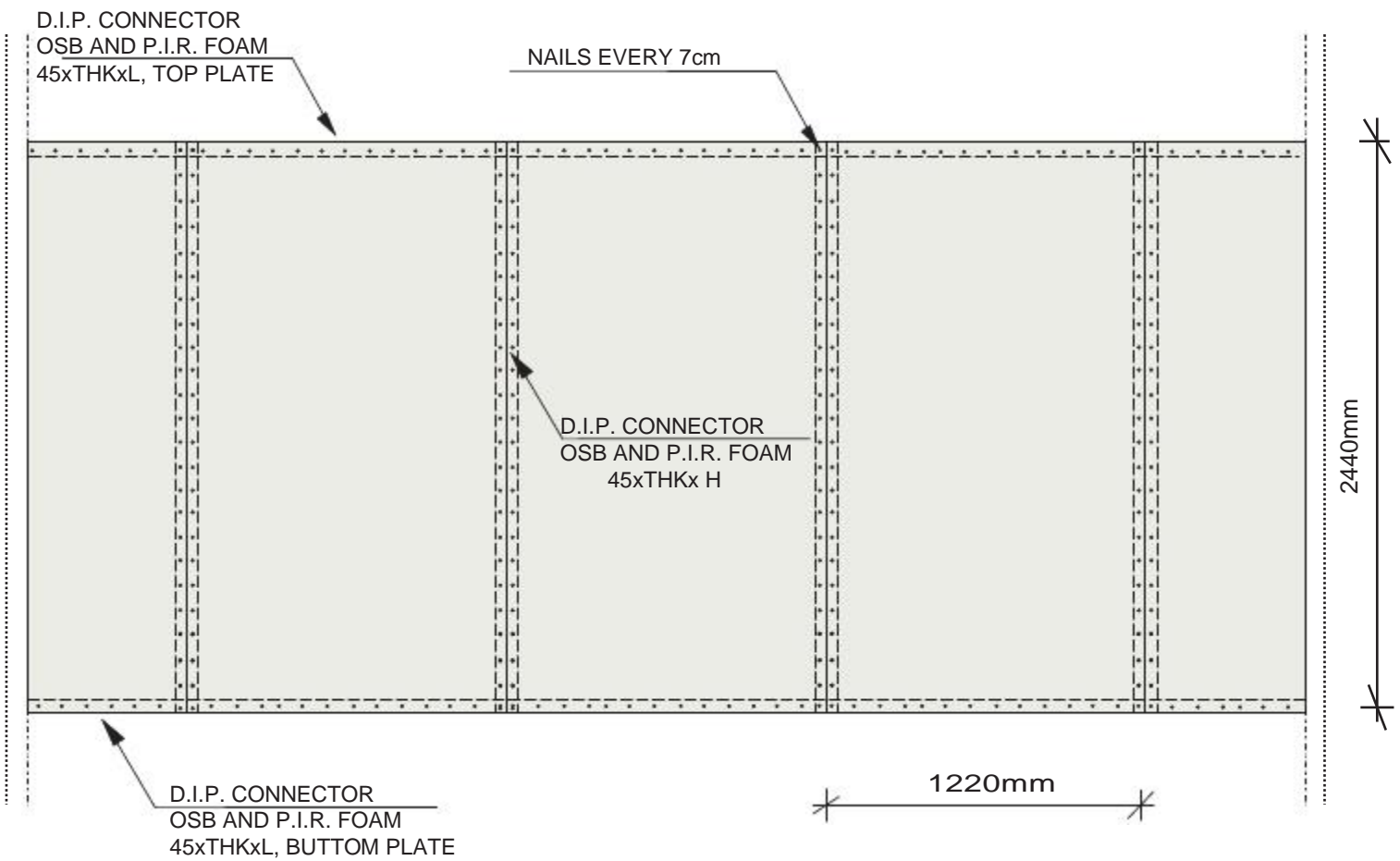
CONNECTION ON DIVIDING WALL TO CEILING



VERTICAL SECTION

FIG.3

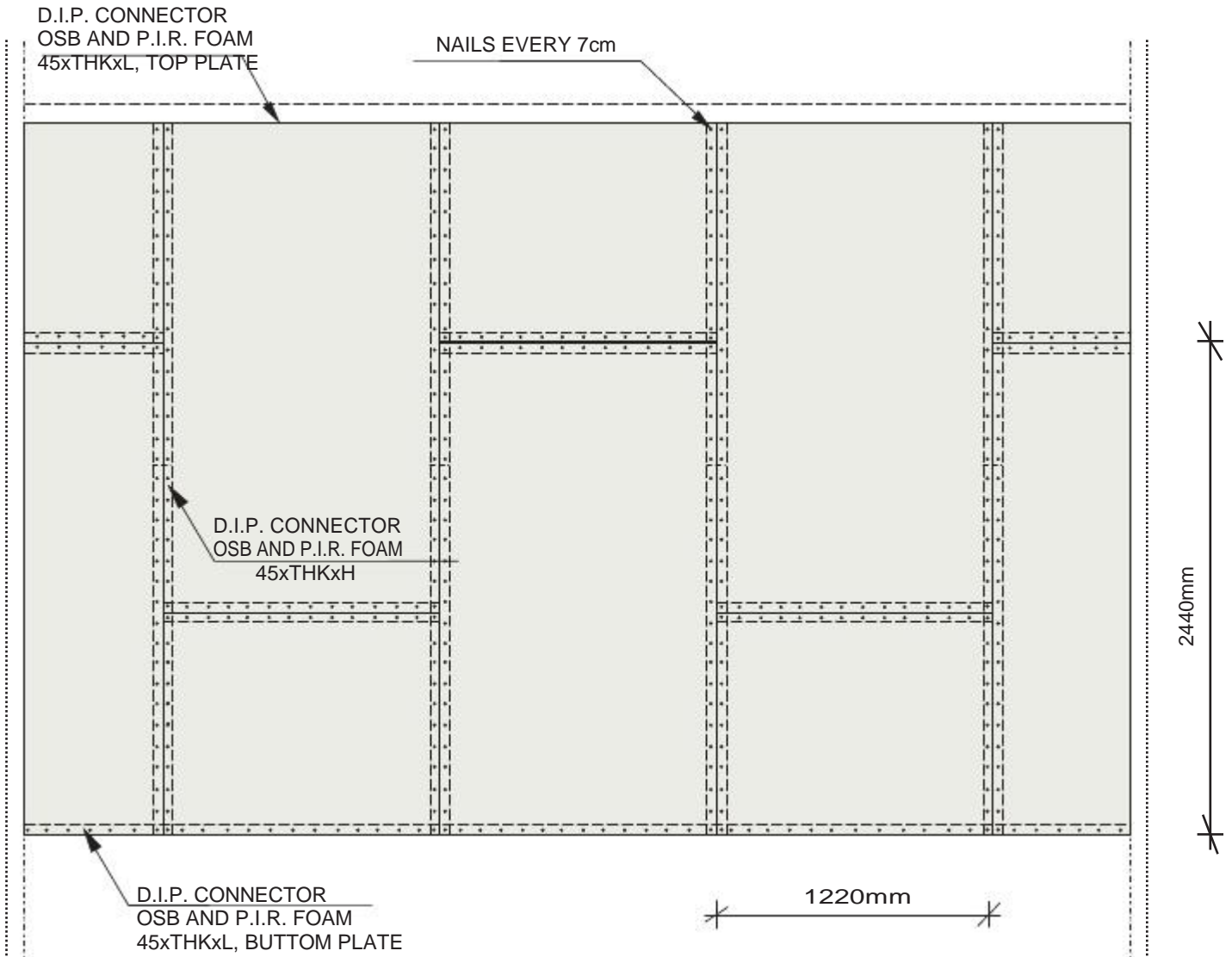
D.I.P. ELEVATION FOR WALLS WITH NORMAL HEIGHT



ELEVATION

FIG.4

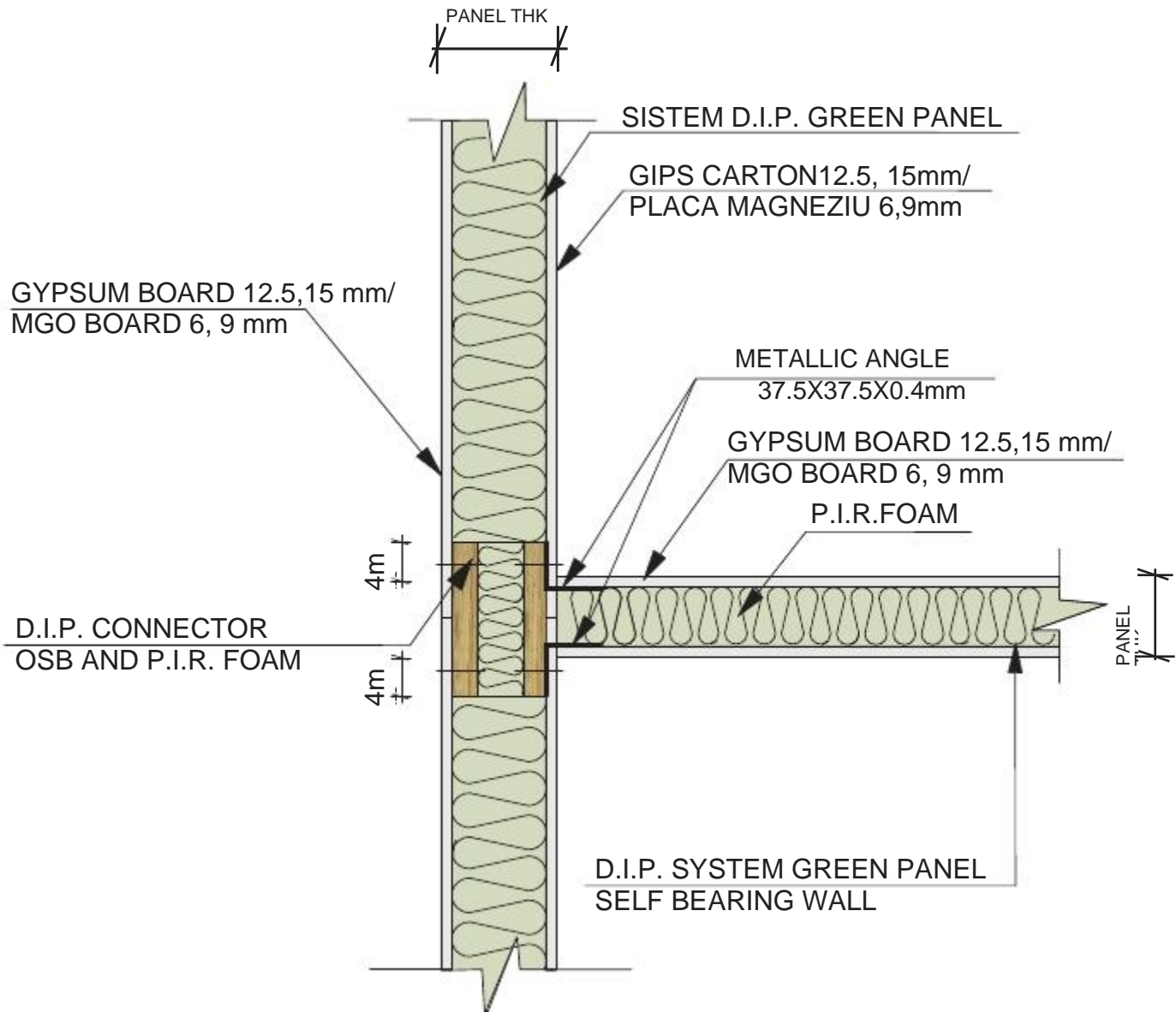
D.I.P. ELEVATION FOR WALLS WITH HIGHER HEIGHT THAN NORMAL



ELEVATION

FIG.5

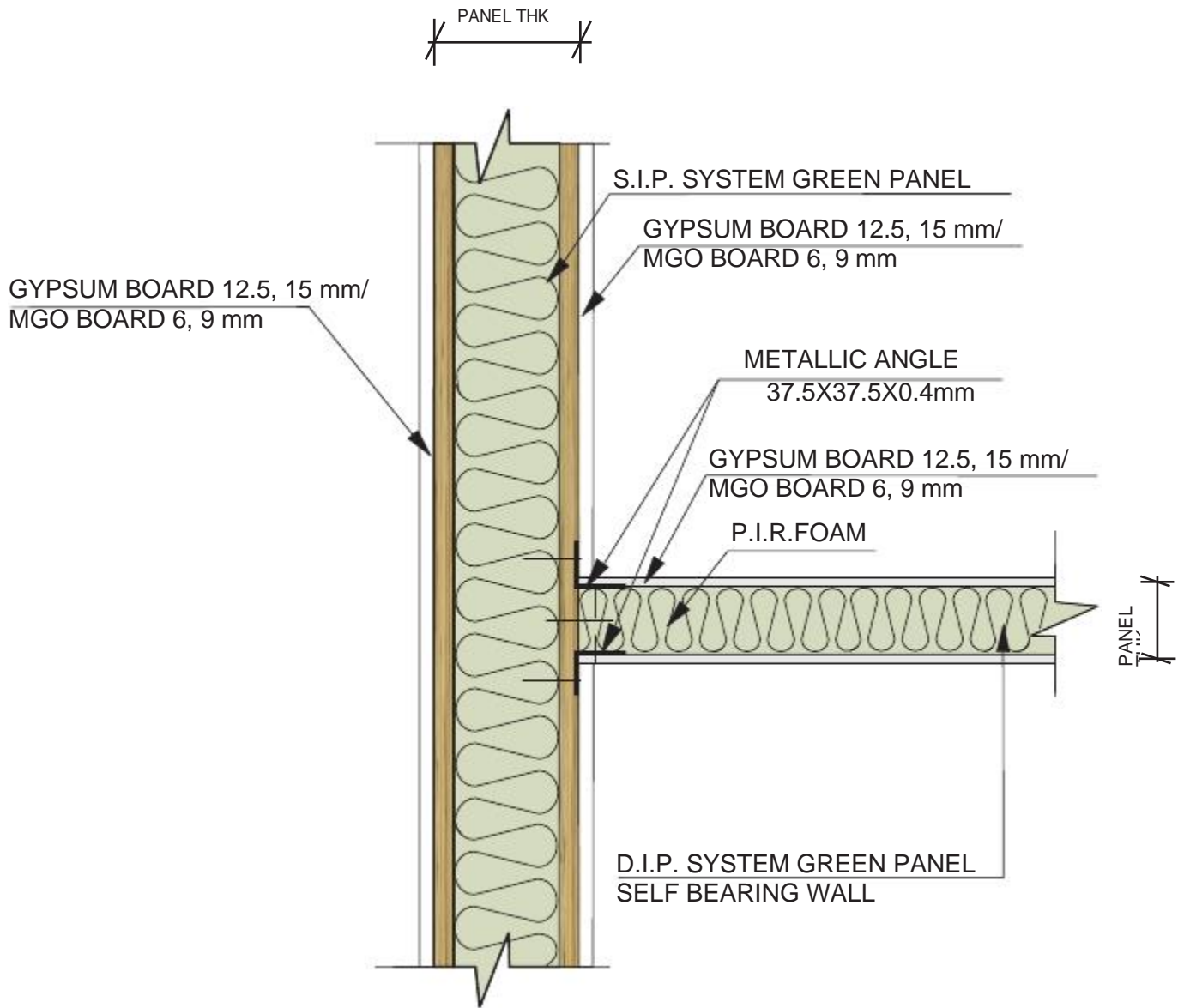
CONNECTION ON DIVIDING WALL WITH DIVIDING WALL



HORIZONTAL SECTION

FIG.6a

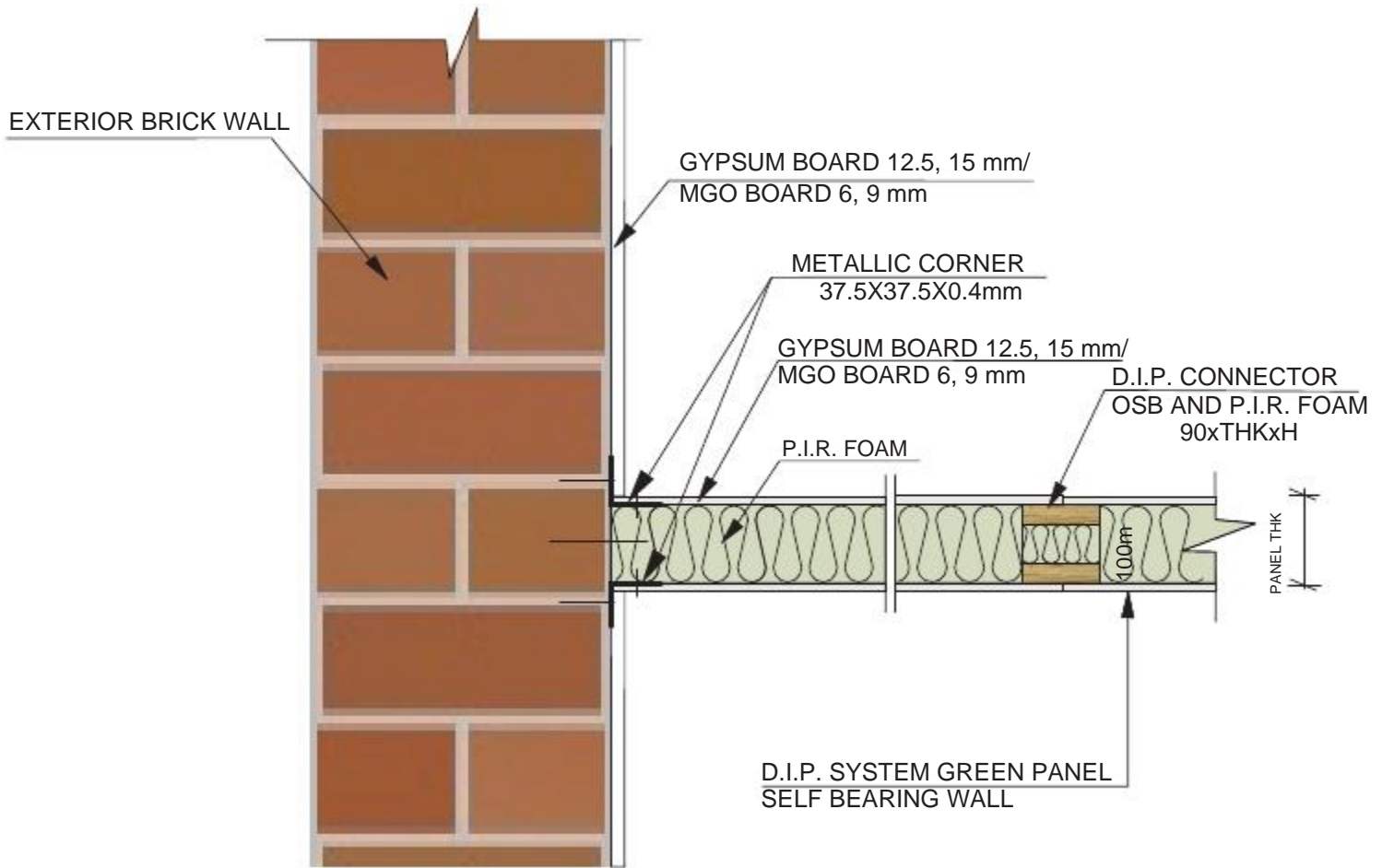
CONNECTION ON DIVIDING WALL WITH S.I.P. WALL



HORIZONTAL SECTION

FIG.6b

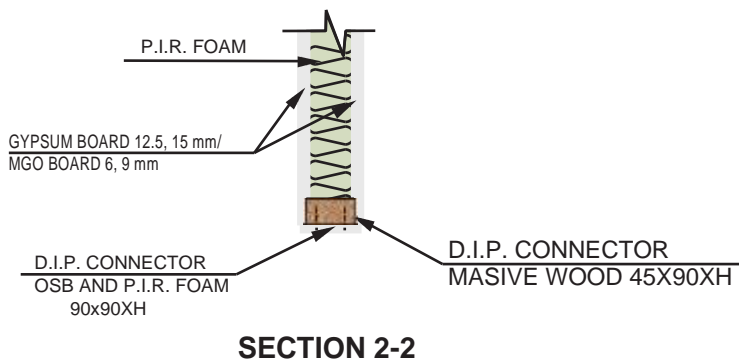
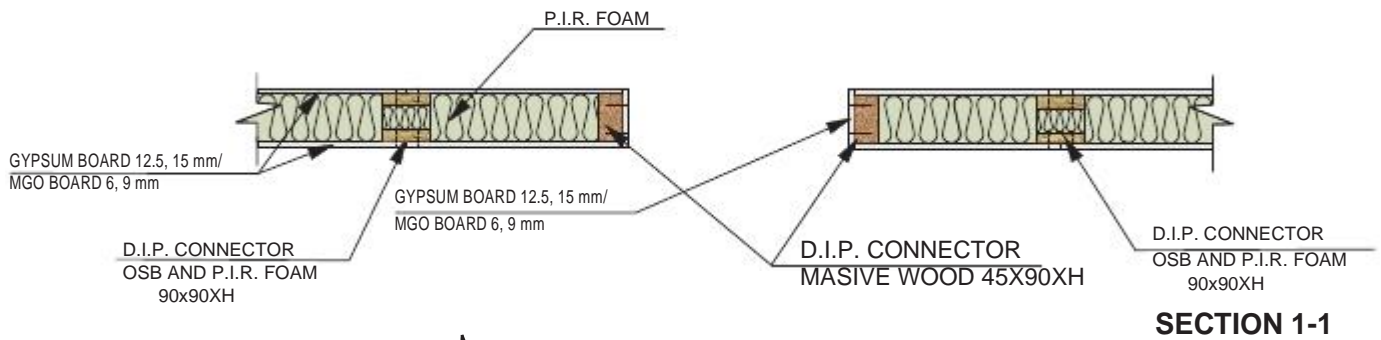
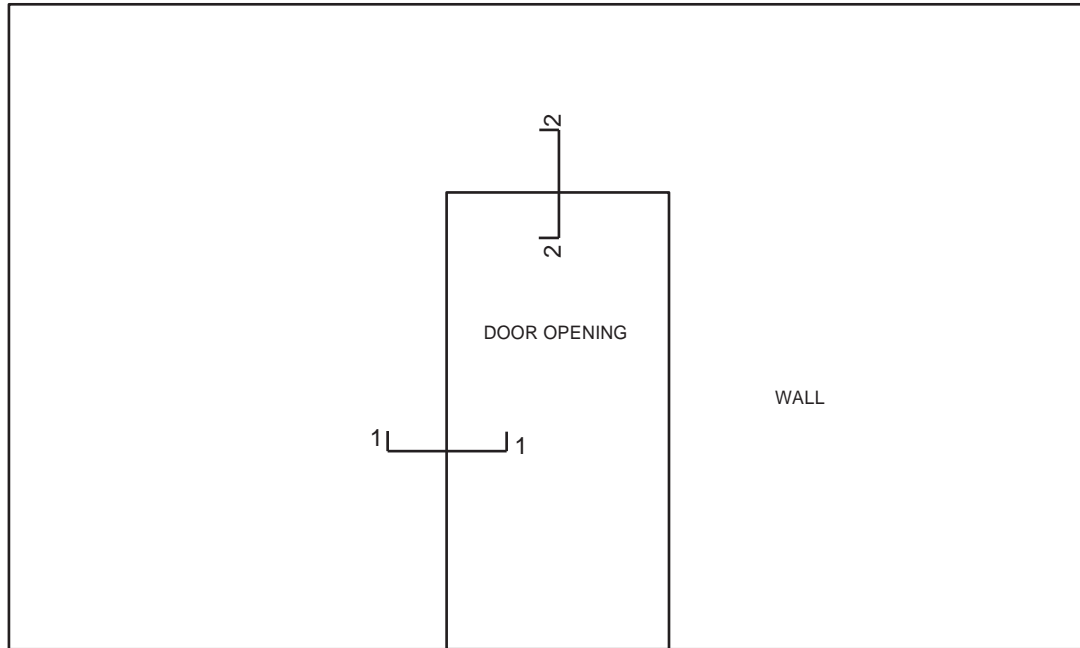
CONNECTION ON DIVIDING WALL WITH BRICK WALL



HORIZONTAL SECTION

FIG.6c

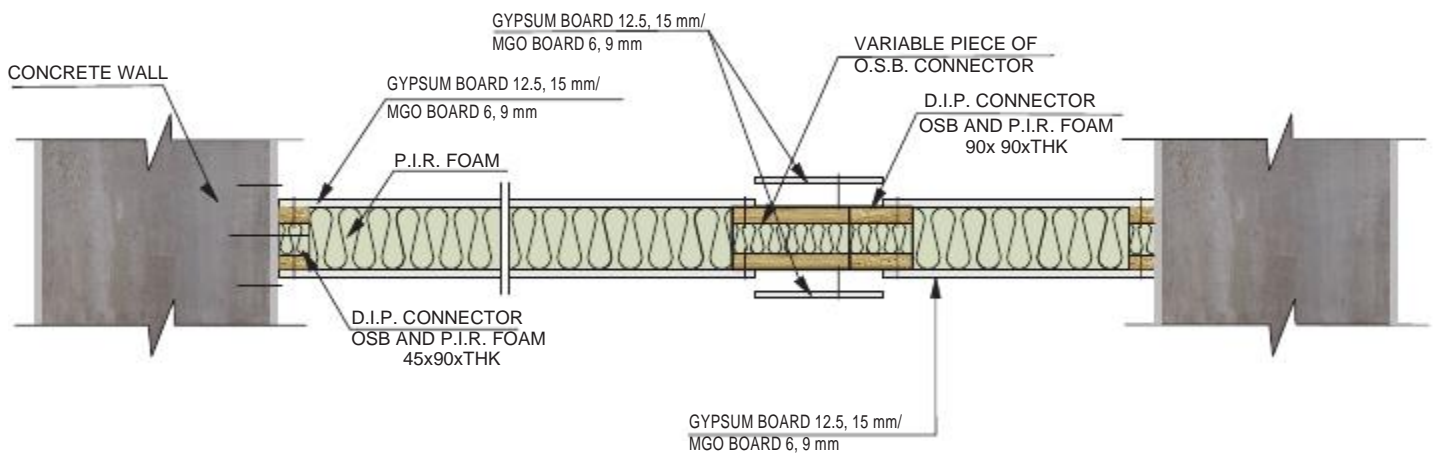
D.I.P. - SECTIONS



HORIZONTAL SECTION

FIG.7

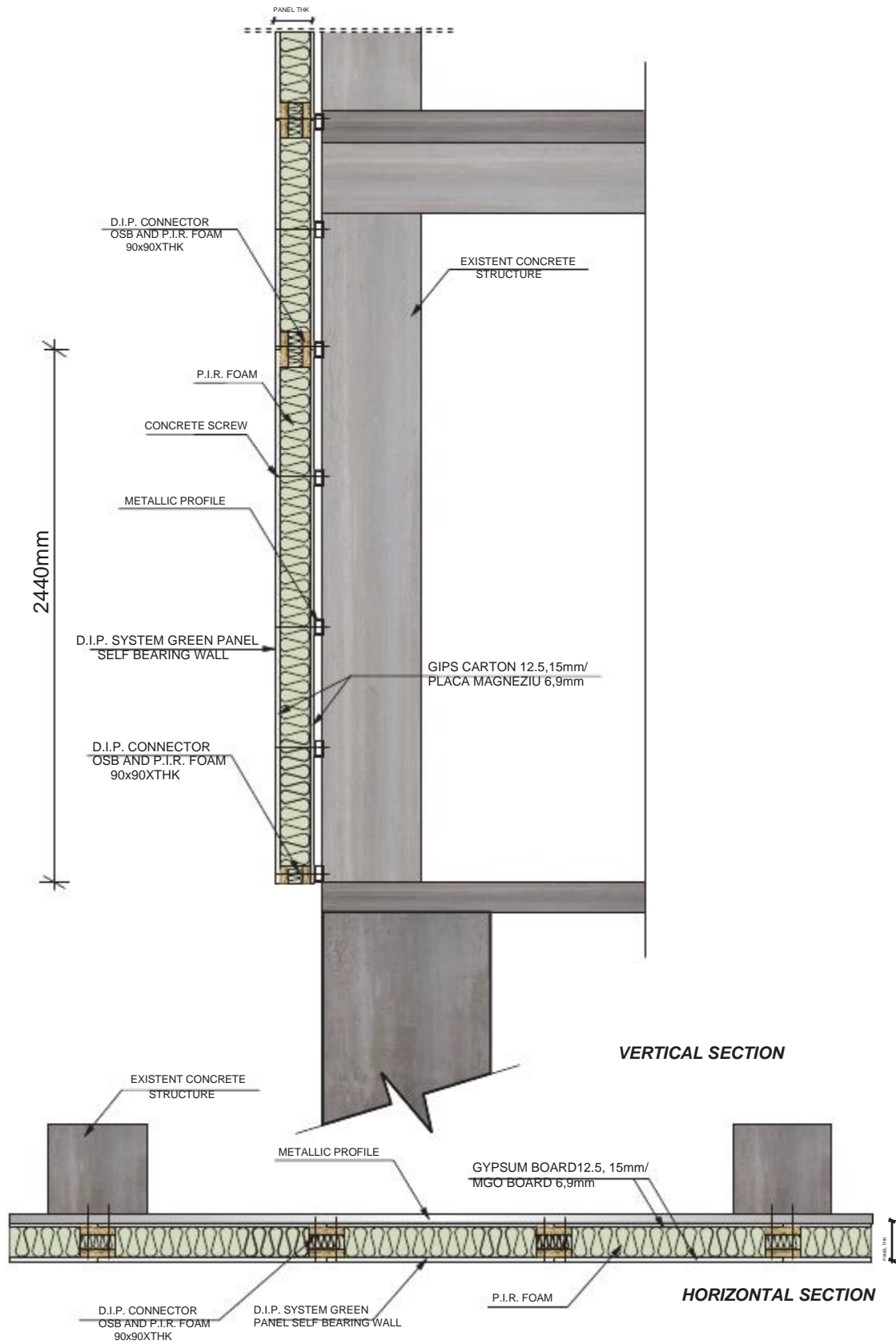
DIP PANEL CONNECTION ON AN EXISTING OPPENING



HORIZONTAL SECTION

FIG.8

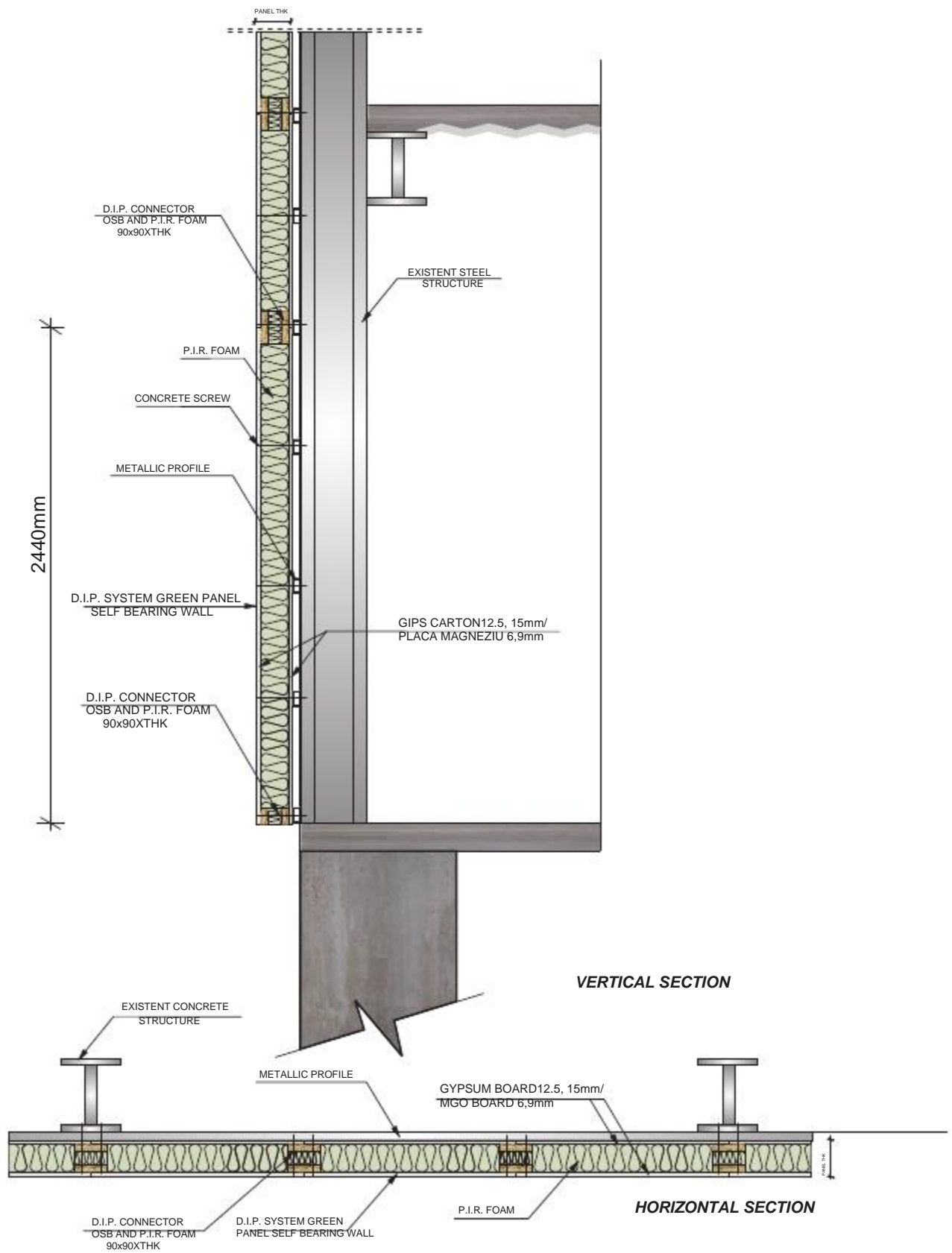
DIP PANEL CONNECTION CLADDING CONCRETE STRUCTURE



HORIZONTAL SECTION

FIG.9

DIP PANEL CONNECTION CLADDING STEEL STRUCTURE



VERTICAL AND HORIZONTAL SECTION

FIG.9

D.I.P. - DIVIDING INSULATED PANELS Self-Bearing Wall System



General agent Scandinavia
www.h15.se
www.green-panel.se
info@h15.se